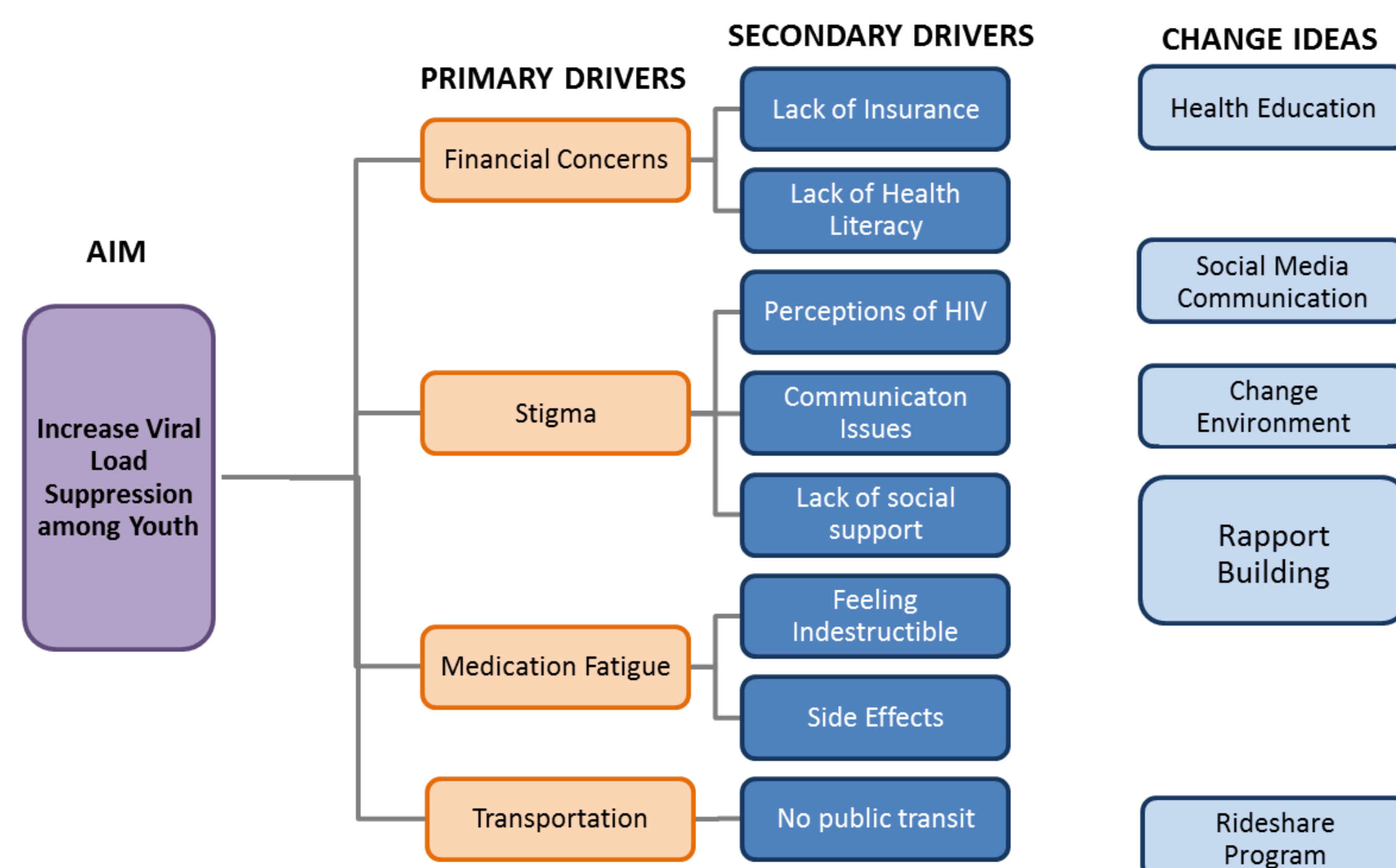


## Background

Through participation in an innovative, collaborative telehealth program, the UNC ID Clinic has worked to improve HIV viral load suppression among youth ages 18 to 24 under our care. A dedicated youth social worker implemented an educational initiative in July 2018 to help patients understand how being undetectable means they cannot transmit HIV to others (untransmittable).

Adherence to daily antiretroviral medications helps protect individual health and prevents transmission of the virus to others.

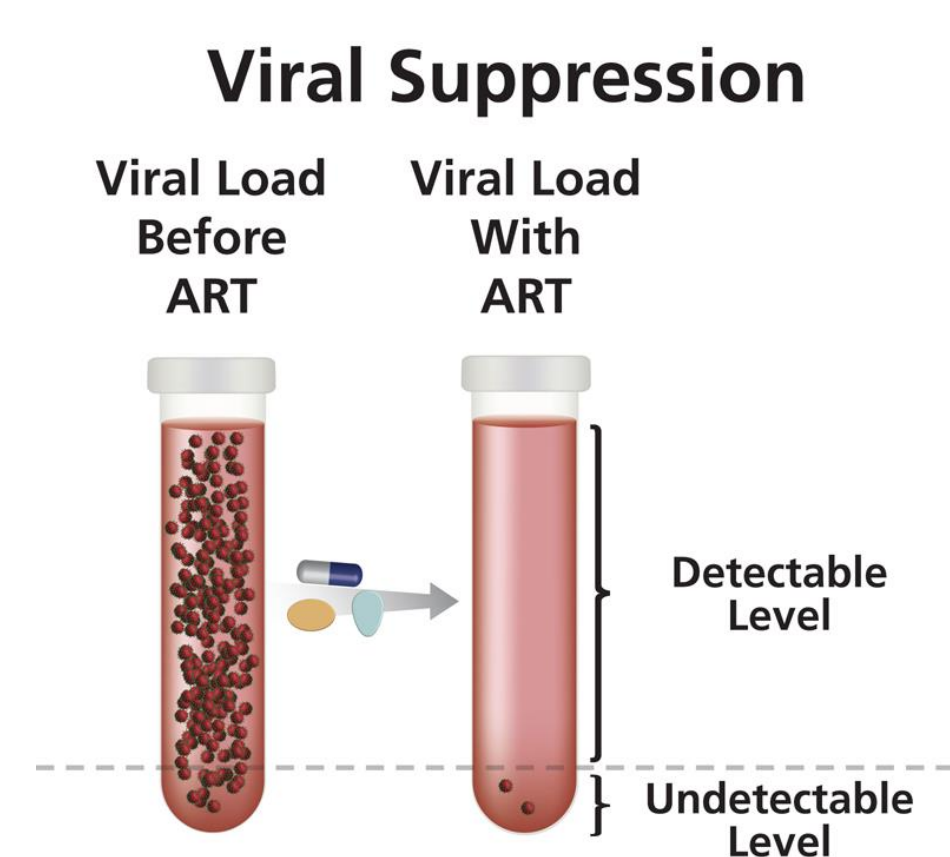
Youth living with HIV encounter various difficulties in adhering to HIV medications, resulting in more frequent periods of HIV viral load detectability than the overall adult population.



## Measures

### Viral Load Suppression

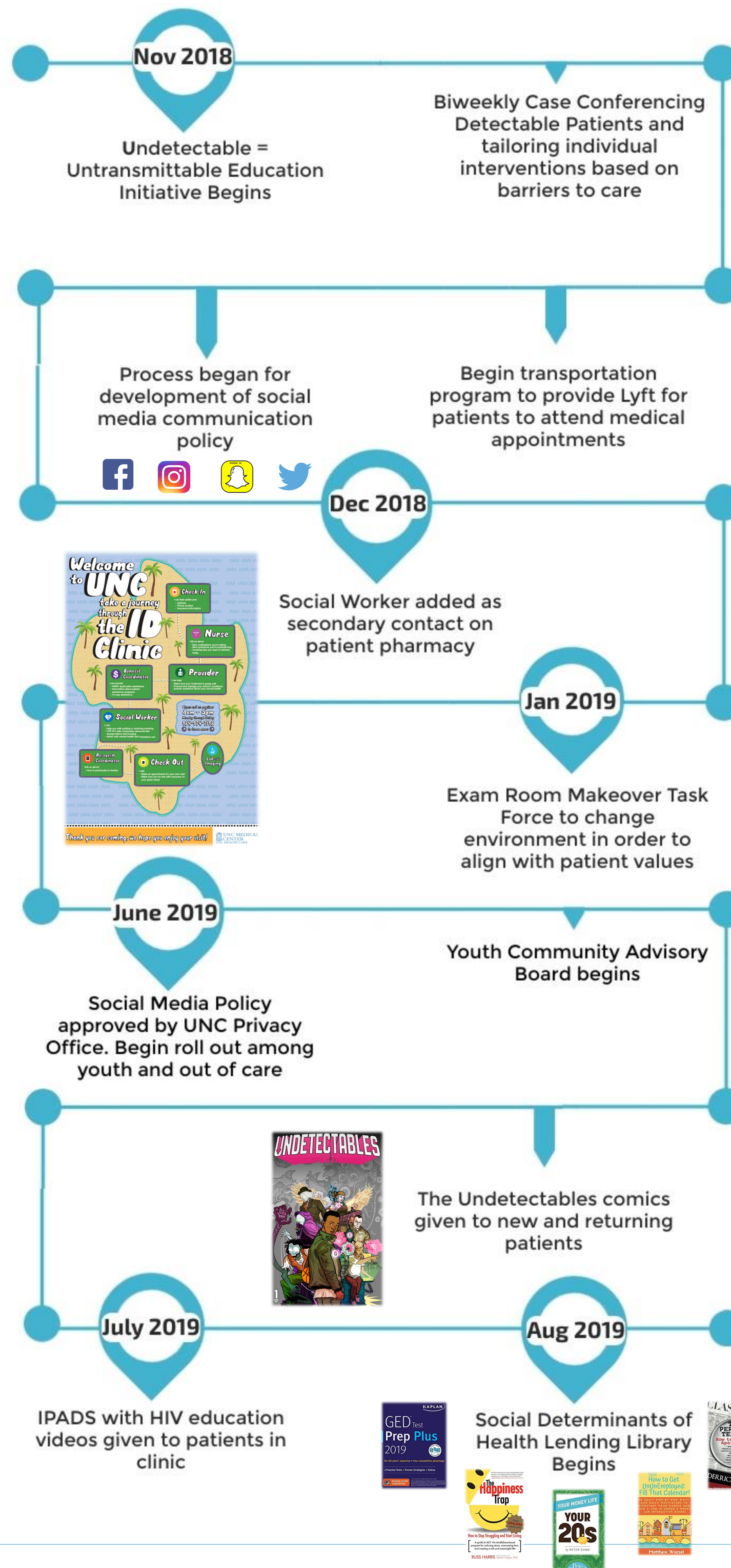
- Updated and pulled monthly by age group for comparison
- List created of detectable patients to case conference



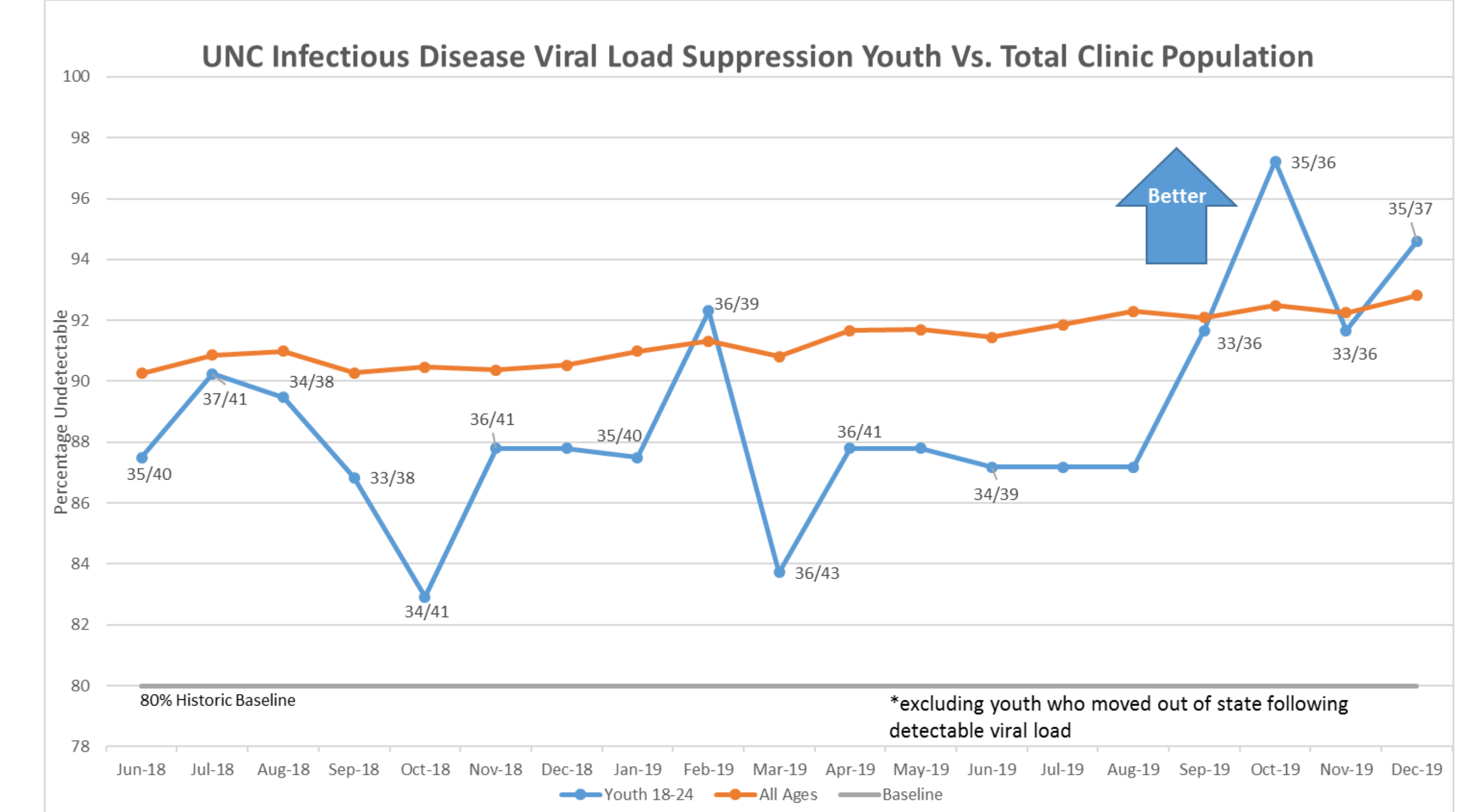
### Barriers to Care

- Document individualized observed and patient reported barriers to adherence

## Interventions



## Results



- Steady improvement with highest rate of viral suppression occurring in October 2019 at 97%
- 100% of new diagnoses became undetectable within two months of initiating care
- Three youth over 18 months moved out of state directly following elevated viral load so were taken out of data as outliers.
- Large fluctuations often occur as new diagnoses and out of care patients establish in clinic and age out at 25 years old

Detectable Patients											
	Mar-19	Apr-19	May-19	Jun-19	Jul-19	Aug-19	Sep-19	Oct-19	Nov-19	Dec-19	
New Diagnosis	3	3	1	1	1	1	1	1	1	1	
Out of care	3		2	1				2	1	1	1
Moved Away	2	2	2	1	1	2	2	2	2	2	2
Lost to Follow Up			2	2	4	4	1	1	1	1	1

\* Data only available from March 2019 – December 2019

## Plans for Continuous Quality Improvement

We will continue to meet regularly as a team to problem solve and provide support to youth as well as utilize feedback from youth community advisory board to tailor future interventions.

Tasks	Person(s) responsible
Pull monthly reports of unsuppressed patients.	Social Worker
Biweekly case conference patients.	Program Coordinator, MD, and Social Worker
Provide continuous case management for all youth 18-24	Social Worker
Continue Youth Community Advisory Board with new questions every quarter.	Social Worker
Provide ongoing health education regarding U = U, provider adherence counseling and tools, provide psychosocial support and care coordination.	All providers and staff, Social Worker will continue developing interventions.